

Recording Staff Training in Bromcom

Welcome to the Webinar. The session will begin shortly.

Please ensure that you also have an audio connection either through a headset and microphone attached to your computer or by telephone to the published number.

You will join the session muted but there is a chat facility available where you can type questions.

This session will be recorded and shared with colleagues after the session. By attending you agree and accept you may be captured in the recording.

Introductions

Alison York
Digital Services



Welcome

Feel free to ask questions throughout either in the chat or put your hand up.

We will share these slides and the recording after the session.

There will be time to ask questions at the end of the session.



Why I decided to run this webinar

School Query

Confusion

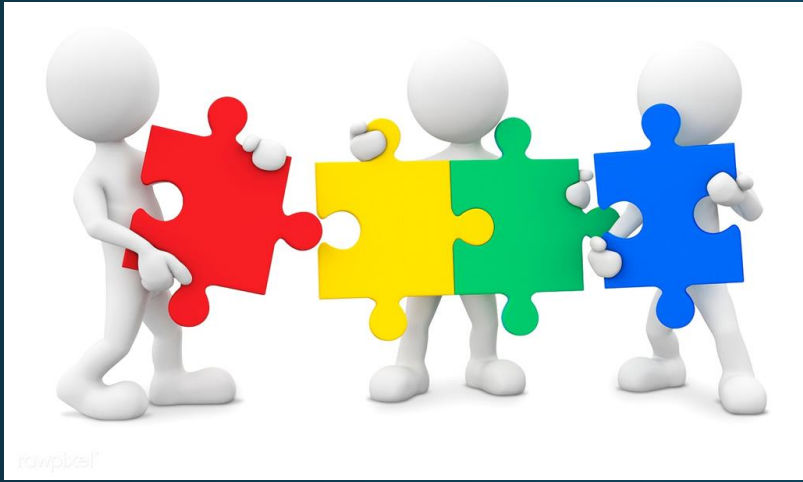
Clarification

Sharing

Staff Training and SWC

- Reminder that recording staff training in Bromcom is optional
- It is not collected in School Workforce Census





Explanation

Training can be recorded in 3 different places.

It is up to the school to decide which is appropriate to use.



1. Qualifications > Trainings
2. Performance Management > CPD: In Service Training & Monitoring and Evaluation
3. Performance Management > CPD: Activities

3 different ways!

Training Items transferred from SIMS will show under

1. Qualifications > Training

Qualifications > Trainings

Trainings					 			
Grid actions		Copy	Excel	CSV	PDF	Print	Search:	<input type="text"/>
Title	↓	Start Date	↑	End Date	↑	Completed	↑	
Positive Leadership in Education		07/02/2022		07/02/2022		Yes		
Team Teaching		13/03/2012		13/03/2012		Yes		

Performance Management > CPD: Activities

CPD Activities 🗑️ +

Show historical data

Grid actions: Copy Excel CSV PDF Print Search:

Summary ↕	Linked Objective(s) ↕	Type ↕	Start Date ↕	End Date ↕	Complete ↕	Expiry Date ↕
Integer et nibh non nibh venenatis pretium in nec justo.		Online Learning	28/08/2023	28/09/2023	Yes	
Suspendisse quis metus facilisis, tincidunt erat ut, commodo ex.		Online Learning	27/07/2023	27/08/2023	Yes	

Performance Management > CPD: In Service Training & Monitoring and Evaluation

CPD: In Service Training & Monitoring and Evaluation 🗑️ +

Grid actions Copy Excel CSV PDF Print Search:

CPD Type ⌵	Nature of Activity ⌵	Date ⌵	Provider ⌵	Staff Supervisor ⌵
In Service Training	KCISE Training	21/09/2020	LA	
In Service Training	Team Teach	06/03/2012	Teacher Training School	
Monitoring and Evaluation	Performance Management 2012	13/03/2012		Chad Tailor
Monitoring and Evaluation	Performance Management 2011	01/03/2011		Chad Tailor

Bulk Updating

Manual Data Export/Import

- Data source = In Service Training

- Updates Performance Management

LET'S LOOK AT
THE TRAINING
DATA

QUESTIONS



THANKYOU